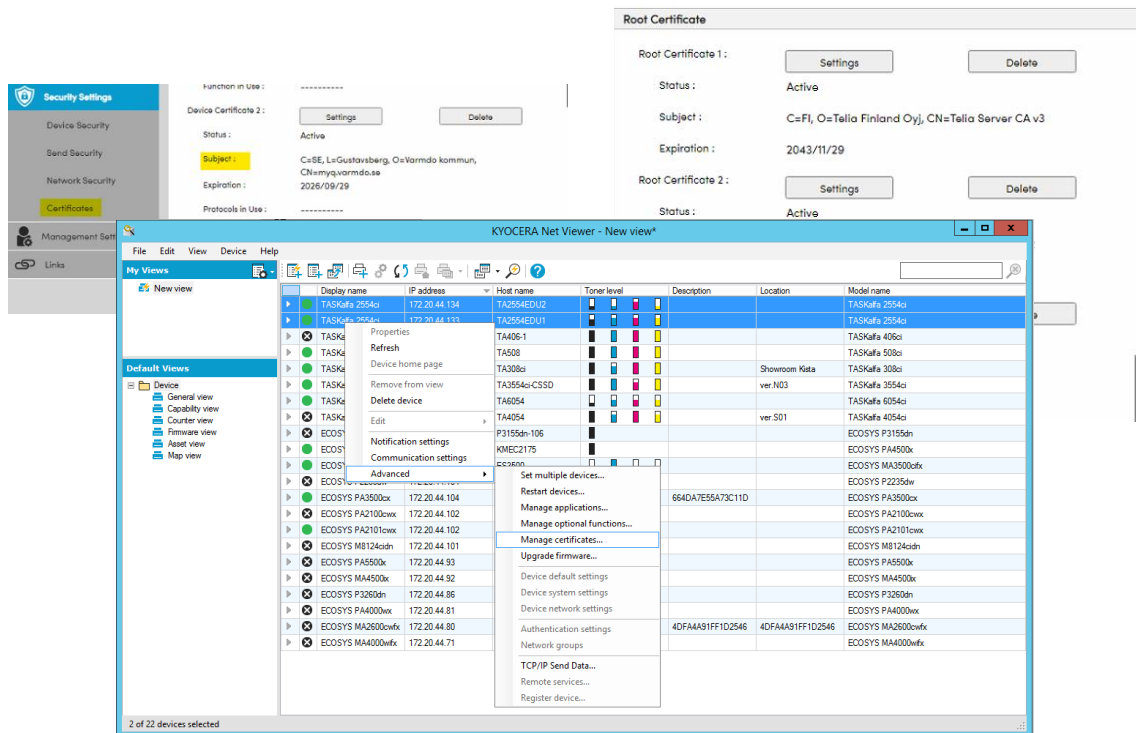


Delete and Import certificates via Kyocera Net Viewer

This guide shows you how to delete and install certificates on one or many devices via Kyocera Net Viewer. This can also be done via Kyocera Device Manager.

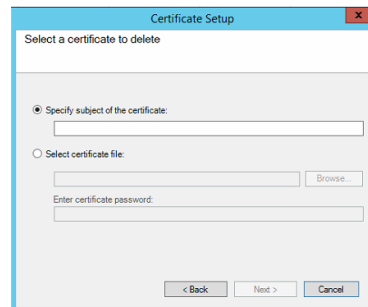
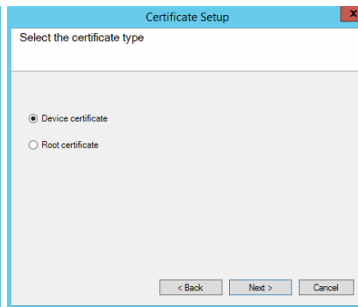
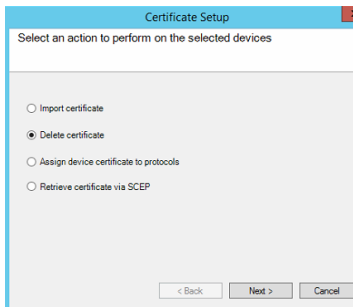
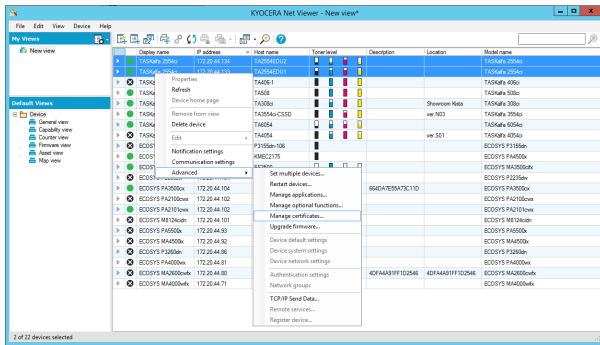
Contents

- Delete device certificate 2
- Delete Root Certs 3
- Install Device Certificate and Root Certificates 4
- Manage certificate on one single device 5
- Notes 6

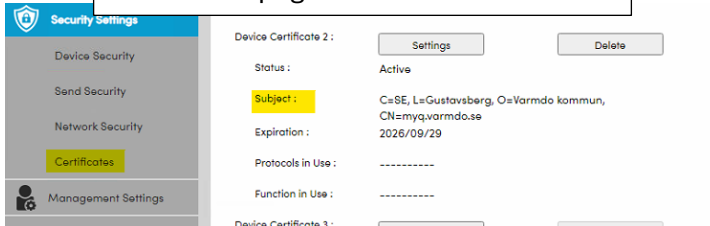


Delete device certificate

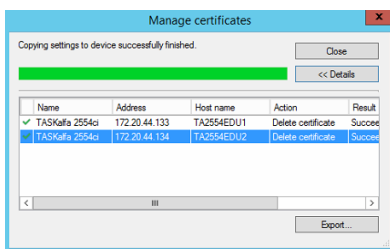
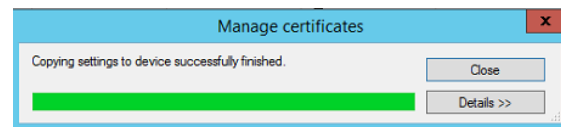
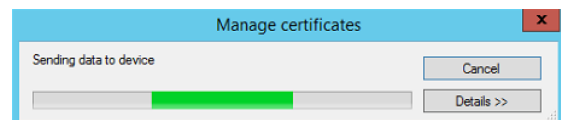
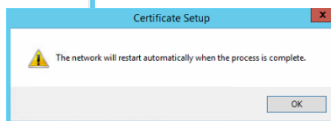
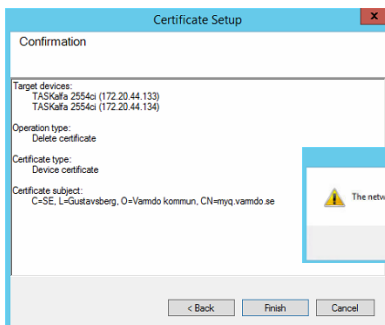
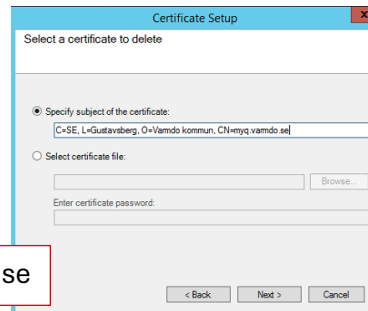
Right click, Advanced, Manage Certificates...



Device Web page "Command Center RX"



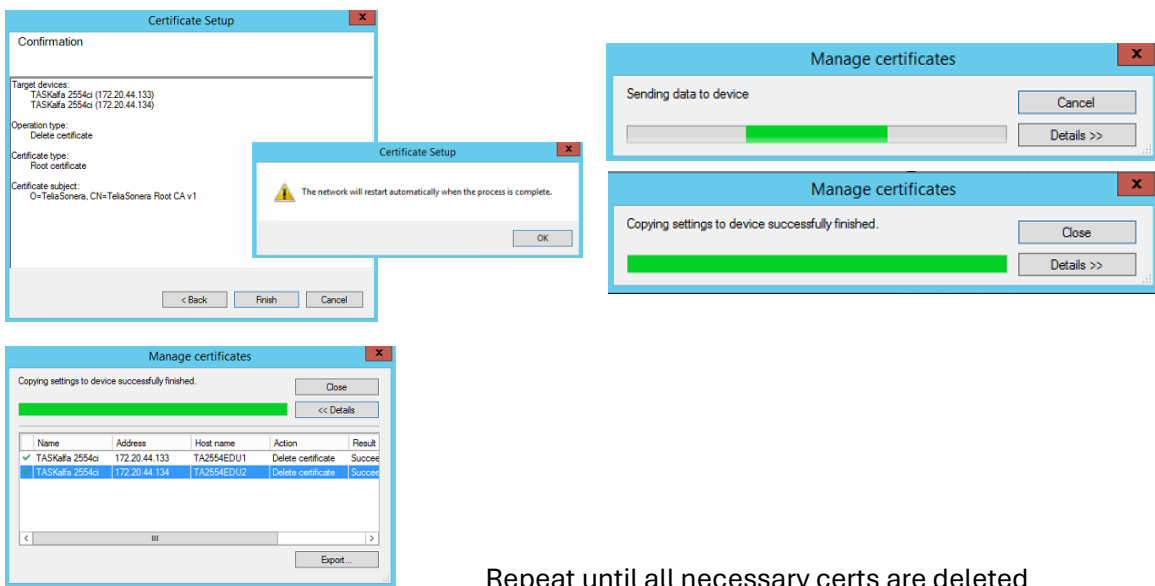
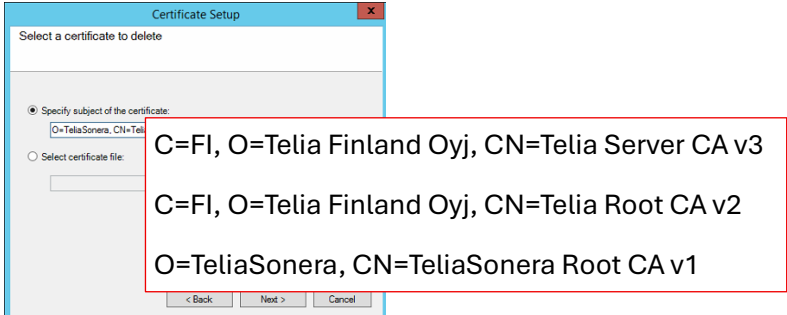
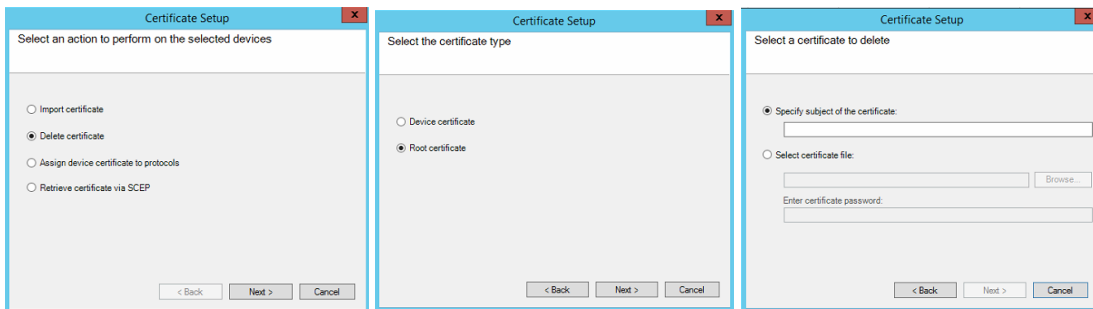
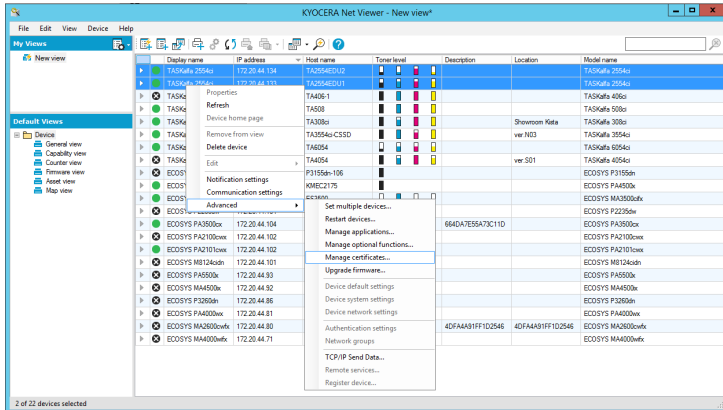
C=SE, L=Gustavsberg, O=Varmdo kommun, CN=myq.varmdo.se



Repeat until all necessary device certs are deleted

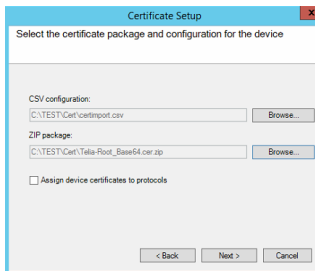
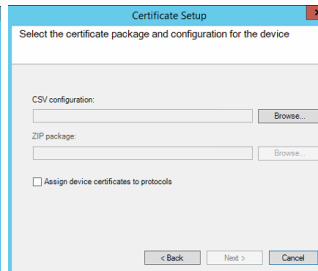
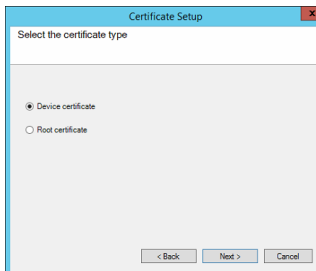
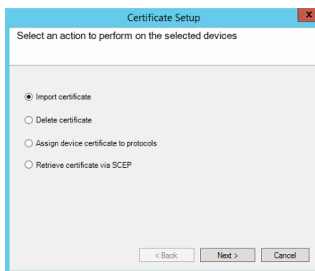
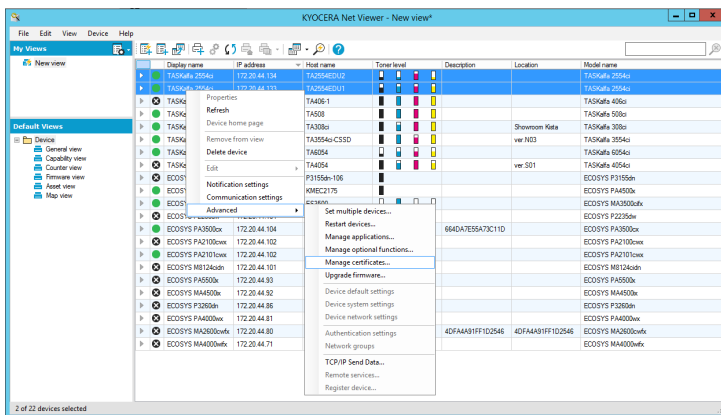
Delete Root Certs

Right click, Advanced, Manage Certificates...



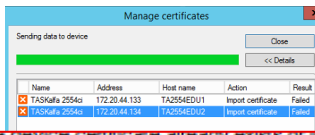
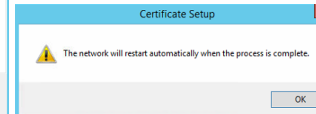
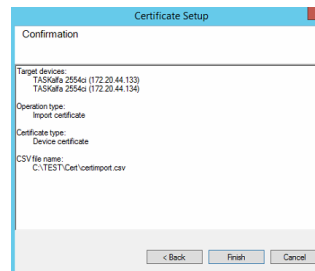
Repeat until all necessary certs are deleted

Install Device Certificate and Root Certificates



CSV: three columns
 Device1serial, PFX (p12) Certificate name, Certificate PWD
 Device2serial, PFX (p12) Certificate name, Certificate PWD
 Device3serial, PFX (p12) Certificate name, Certificate PWD
 Device4serial, PFX (p12) Certificate name, Certificate PWD

The zip file can contain only one device certificate, wildcard or all unique device certificates specified in the CSV-file

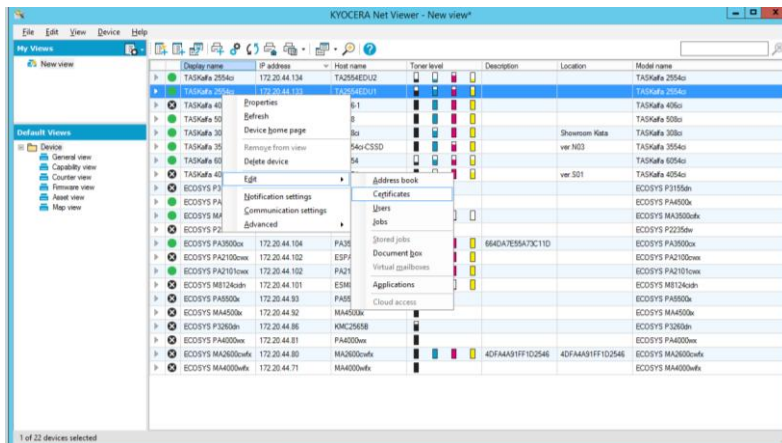


The device certificate already exists or is invalid.

If the PFX (P12) includes all necessary information, all certificates, Device and Root(s), will be installed at the same time.

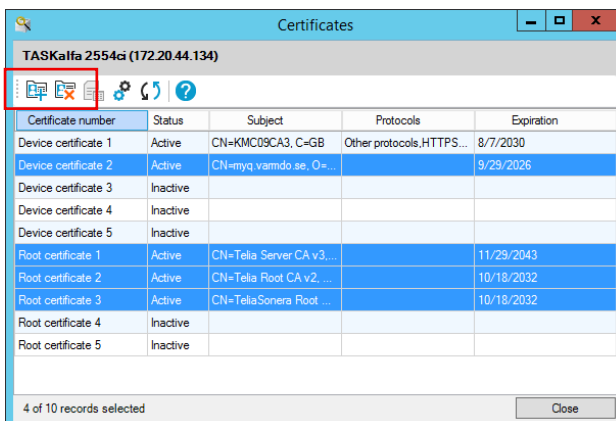
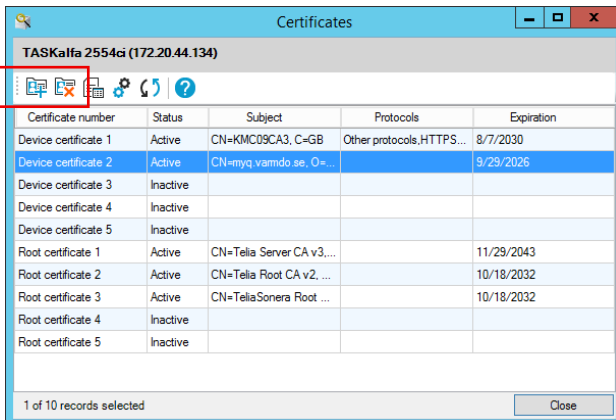
Manage certificate on one single device

Right Klick, Edit, Certificates



Select one or several certificates

Add (+) and Delete (x) in the upper left corner



Notes

